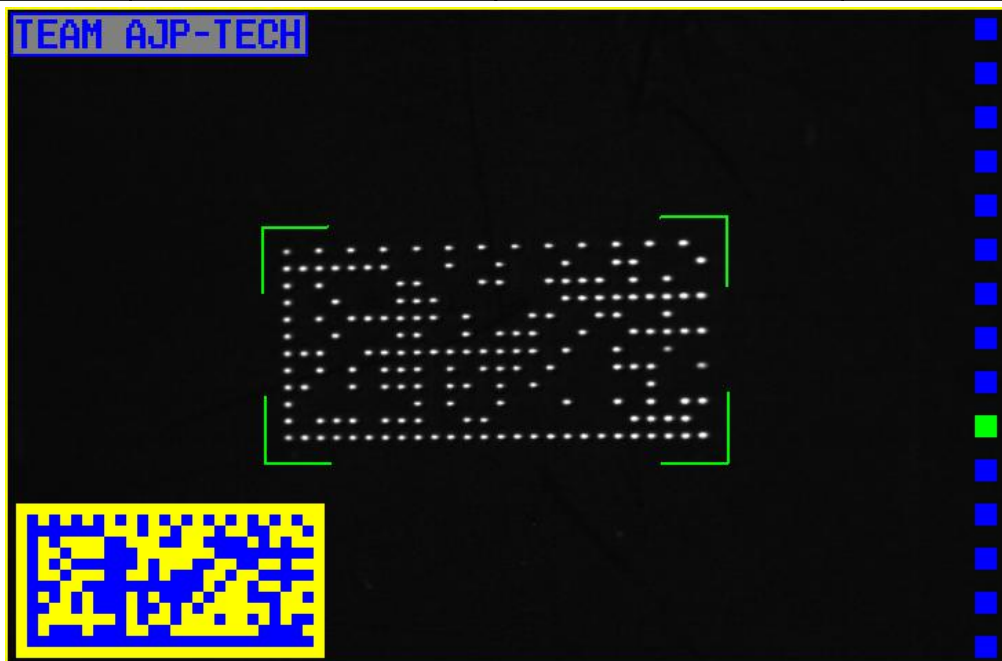
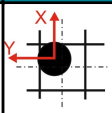
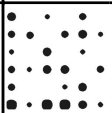
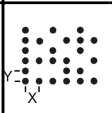

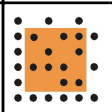


<b>Code Content</b>	TEAM<SP>AJP-TECH		
<b>Project</b>	Markator VU2	<b>Verificationsystem</b>	DMR220
<b>Customer</b>	AJP-tech	<b>Codetyp</b>	ECC200 / 26x12
<b>Examiner</b>		<b>Software</b>	DM 8.3.50
<b>Date/Time</b>	29.06.2021, 11:09:28	<b>Pixels per Module</b>	12.0
<b>Setup</b>	DPM4.0/-/480/D		



ID	Description	Rating	Target	Result
DI	Deviation of dot intensity	4 (A)	4 (A)	✓
DS	Deviation of dot size	4 (A)	4 (A)	✓
PD	Precision of dots	4 (A)	4 (A)	✓
HD	Homogeneity of dots	4 (A)	4 (A)	✓
AN	Axial Nonuniformity	4 (A)	4 (A)	✓
FD	Finder Damage	4 (A)	4 (A)	✓
UE	Unused Error Correction	4 (A)	4 (A)	✓
	Total Rated reading	4 (A)	4 (A)	✓

Criteria	Measurement Parameter	
Precision of dots [PD]		Deviations in X and Y grid
Homogeneity of dots [HD]		Contrast Area Height, width
Axial Nonuniformity [AN]		This describes the distortion of code along its main axes in X and Y direction.
Finder Damage [FD]		Damage in the Finder and Alternating Grid and Quietzone.
Unused Error Correction [UE]		Unused error correction. A measure of the number of bit errors that had to be corrected using the Reed/Solomon error correction.